

Portfolio



**claire
hammond**



Claire Hammond DID DINZ
Design Director - ritual interiors

Claire is an award-winning interior designer who has built an impressive multi-disciplinary portfolio spanning Vancouver, Sydney and Auckland. Drawing from her experience leading the design of some highly-acclaimed projects overseas, Claire has developed a holistic and considered approach to interior design.

Diploma of Interior Design (DID)
Member of the Designers Institute of New Zealand (DINZ)

Category Winner
2021 Restaurant & Bar Design Awards
Hotel - Australia & Pacific
Woodcut - Design Team Leader for Loopcreative



Hospitality & Retail

woodcut.

Restaurant & Bar
Design Awards
Winner

Client Crown Resorts Sydney
Interior Design loopcreative
Location Barangaroo, Sydney

Project Woodcut
Year 2018-2020
Type Hospitality
Size 1000m2

Rendered Services
Concept Design
Spatial Planning
Design Development
Joinery Design
Material and Finishes Selection
Furniture Selection
Construction Drawings
Kitchen Planning and Coordination
Consultant Coordination
Shop Drawing Review
Site Queries
Project Administration

Photography Anson Smart

loopcreative



Woodcut is a world-class restaurant at the new Crown Resorts Sydney, which provides guests with a unique dining experience that celebrates Australian produce and cooking with wood, charcoal and steam.

As Interior Designer and Lead Project Coordinator, Claire Hammond worked closely with acclaimed restaurant operators, project managers, services consultants and builders to design and construct the award-winning fitout.

Involved in all aspects of the project from concept design to completion over the course of three years, Claire was the first point of contact for operators and wider project delivery team.



woodcut.

**Restaurant & Bar
Design Awards**
Winner

Client Crown Resorts Sydney
Interior Design loopcreative
Location Barangaroo, Sydney

Project Woodcut
Year 2018-2020
Type Hospitality
Size 1000m2

Rendered Services
Concept Design
Spatial Planning
Design Development
Joinery Design
Material and Finishes Selection
Furniture Selection
Construction Drawings
Kitchen Planning and Coordination
Consultant Coordination
Shop Drawing Review
Site Queries
Project Administration

Photography Anson Smart

loopcreative



The challenge of a large restaurant is to create intimacy within the space. Woodcut has overcome this challenge by design with a residential scale in mind and an orchestral-approach to service.

The planning consisted of a series of smaller dining areas, including private dining rooms, an exclusive chef's table, kitchen counter dining, bar counter dining and external terrace dining spaces, all with sightlines of the open kitchens that reinforce the traditional methods of cooking using wood, charcoal and steam.

woodcut.

Restaurant & Bar
Design Awards
Winner

Client Crown Resorts Sydney
Interior Design loopcreative
Location Barangaroo, Sydney

Project Woodcut
Year 2018-2020
Type Hospitality
Size 1000m2

- Rendered Services
- Concept Design
 - Spatial Planning
 - Design Development
 - Joinery Design
 - Material and Finishes Selection
 - Furniture Selection
 - Construction Drawings
 - Kitchen Planning and Coordination
 - Consultant Coordination
 - Shop Drawing Review
 - Site Queries
 - Project Administration

Photography Anson Smart

loopcreative



woodcut.

**Restaurant & Bar
Design Awards**
Winner

Client Crown Resorts Sydney
Interior Design loopcreative
Location Barangaroo, Sydney

Project Woodcut
Year 2018-2020
Type Hospitality
Size 1000m2

- Rendered Services**
- Concept Design
 - Spatial Planning
 - Design Development
 - Joinery Design
 - Material and Finishes Selection
 - Furniture Selection
 - Construction Drawings
 - Kitchen Planning and Coordination
 - Consultant Coordination
 - Shop Drawing Review
 - Site Queries
 - Project Administration

Photography Anson Smart

loopcreative



woodcut.

Restaurant & Bar
Design Awards
Winner

Client Crown Resorts Sydney
Interior Design loopcreative
Location Barangaroo, Sydney

Project Woodcut
Year 2018-2020
Type Hospitality
Size 1000m2

Rendered Services
Concept Design
Spatial Planning
Design Development
Joinery Design
Material and Finishes Selection
Furniture Selection
Construction Drawings
Kitchen Planning and Coordination
Consultant Coordination
Shop Drawing Review
Site Queries
Project Administration

Photography Anson Smart

loopcreative



woodcut.

Restaurant & Bar
Design Awards
Winner

Client Crown Resorts Sydney
Interior Design loopcreative
Location Barangaroo, Sydney

Project Woodcut
Year 2018-2020
Type Hospitality
Size 1000m2

Rendered Services
Concept Design
Spatial Planning
Design Development
Joinery Design
Material and Finishes Selection
Furniture Selection
Construction Drawings
Kitchen Planning and Coordination
Consultant Coordination
Shop Drawing Review
Site Queries
Project Administration

Photography Anson Smart

loopcreative



silks.

Client Crown Resorts Sydney
Interior Design Strickland
Interior Documentation loopcreative
Location Barangaroo, Sydney

Project Silks Chinese
Year 2019-2020
Type Hospitality
Size 900m2

Rendered Services

- Joinery Design
- Construction Drawings
- Consultant Coordination
- Shop Drawing Review
- Site Queries
- Project Administration

Photography Anson Smart



Crown Resorts commissioned the works of Japanese interior design company Strickland in the creation of their newest Chinese restaurant, Silks, in addition to the adjacent bar, Noodle 88.

Sydney interior architecture studio Loopcreative was engaged to oversee the design development and to produce construction documentation to Australian standards and building code.

Claire Hammond's role as Lead Project Coordinator for Loopcreative involved liaising with project managers from Crown Resorts and overseas interior designers to produce drawings for tender and construction, as well as shop drawing review and site inspections.

silks.

Client Crown Resorts Sydney
Interior Design Strickland
Interior Documentation loopcreative
Location Barangaroo, Sydney

Project Silks Chinese
Year 2019-2020
Type Hospitality
Size 900m2

Rendered Services
Joinery Design
Construction Drawings
Consultant Coordination
Shop Drawing Review
Site Queries
Project Administration

Photography Anson Smart

loopcreative



noodle 88.

Client Crown Resorts Sydney
Interior Design Strickland
Interior Documentation loopcreative
Location Barangaroo, Sydney

Project Chinese Noodle Bar
Year 2019-2020
Type Hospitality
Size 250m2

Rendered Services

Joinery Design
Construction Drawings
Consultant Coordination
Shop Drawing Review
Site Queries
Project Administration

Photography Anson Smart

loopcreative



locali.

Client Romeos IGA Foodhall
Interior Design loopcreative
Location George St, Sydney

Project Locali by Romeo's
Year 2020
Type Retail / Hospitality

Rendered Services
Spatial Planning
Design Development
Joinery Design
Construction Drawings
Kitchen Design
Consultant Coordination
Tender Analysis
Shop Drawing Review
Site Queries
Project Administration

Photography Robert Walsh



Exuding Mediterranean panache and abundance, Locali by Romeo's heightens the supermarket experience. Comprising an artisanal bakery, espresso coffee, pizzeria and dedicated cheese room opposite a central deli counter, with seated areas for casual dining adjacent to each hospitality offering.

These allow a discerning lunchtime crowd to enjoy a quick counter meal between meetings, or a leisurely cheese platter which might stretch to a wine after hours. All of which has been meticulously overseen by consulting Chef, Orazio D'elia of Matteo Double Bay and DownTown.



locali.

Client Romeos IGA Foodhall
Interior Design loopcreative
Location George St, Sydney

Project Locali by Romeo's
Year 2020
Type Retail / Hospitality

Rendered Services
Spatial Planning
Design Development
Joinery Design
Construction Drawings
Kitchen Design
Consultant Coordination
Tender Analysis
Shop Drawing Review
Site Queries
Project Administration

Photography Robert Walsh



bellucci.

Client Nahas Group
Interior Design loopcreative
Location Australia Square, Sydney

Project Bellucci Cucina + Enoteca
Year 2017
Type Hospitality

Rendered Services

Concept Design
Spatial Planning
Design Development
Joinery Design
Material and Finishes Selection
Furniture Selection
Construction Drawings
Kitchen Design
Services Coordination
Tender Analysis
Shop Drawing Review
Site Queries
Project Administration



loopcreative

koi gelato.

Client Koi Dessert Bar
Interior Design loopcreative
Location North Ryde, Sydney

Project Koi Gelato
Year 2018
Type Hospitality

Rendered Services
Concept Design
Spatial Planning
Design Development
Joinery Design
Material and Finishes Selection
Furniture Selection



nando's parramatta.

Client Nando's Australia
Interior Design loopcreative
Location Parramatta, Sydney

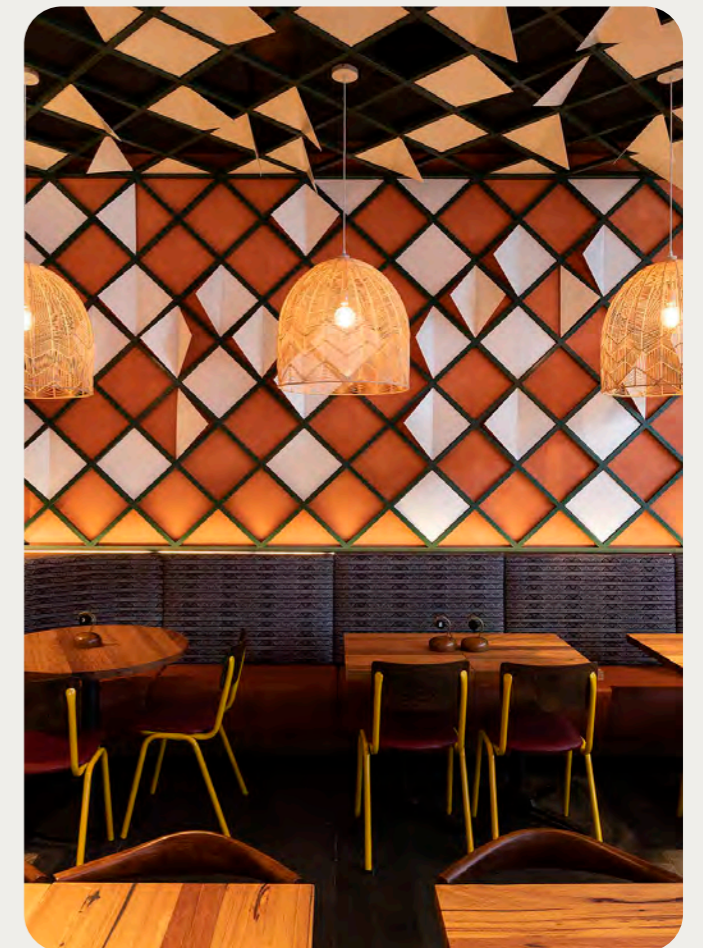
Project Nando's Parramatta
Year 2019
Type Hospitality

Rendered Services

Concept Design
Spatial Planning
Design Development
Joinery Design
Material and Finishes Selection
Furniture Selection
Construction Drawings
Kitchen Design
Services Coordination
Site Queries
Project Administration

Photography Andrew Worssam

loopcreative



nando's buranda.

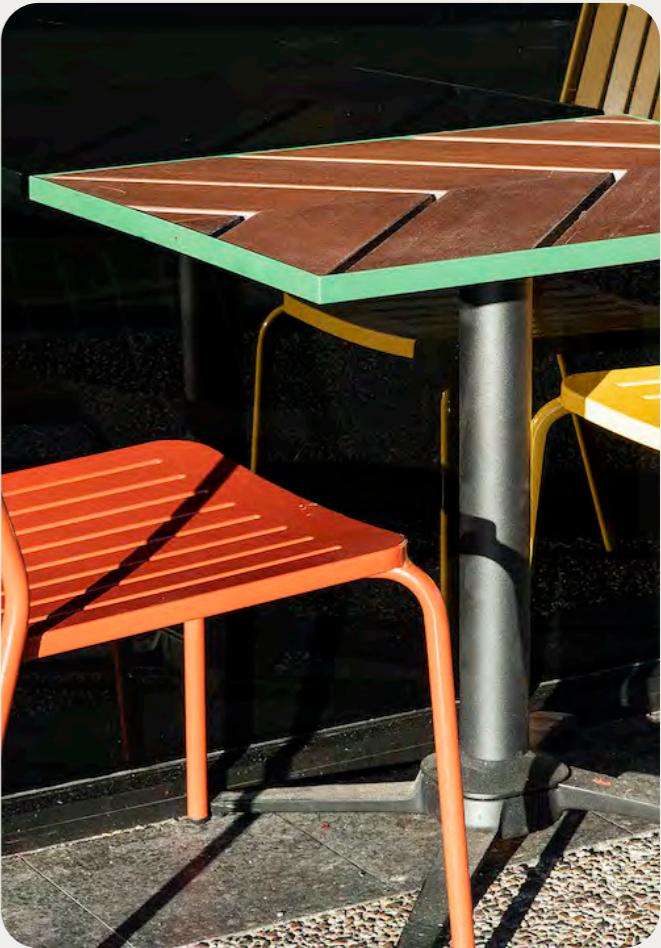
Client Nando's Australia
Interior Design loopcreative
Location Buranda, Brisbane

Project Nando's Buranda
Year 2019
Type Hospitality

Rendered Services
Concept Design
Spatial Planning
Design Development
Joinery Design
Material and Finishes Selection
Furniture Selection
Construction Drawings
Kitchen Design
Services Coordination
Site Queries
Project Administration

Photography Andrew Worssam

loopcreative



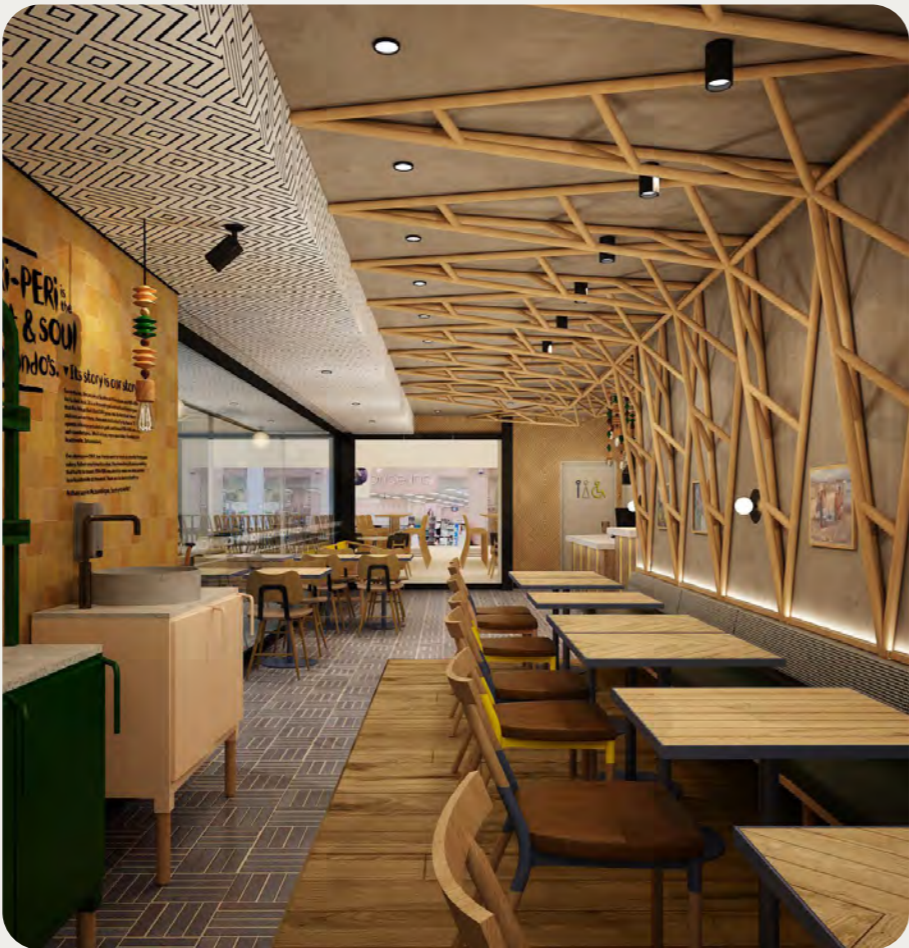
nando's brimbank.

Client Nando's Australia
Interior Design loopcreative
Location Brimbank, Melbourne

Project Nando's Brimbank
Year 2018
Type Hospitality

Rendered Services

- Concept Design
- Spatial Planning
- Design Development
- Joinery Design
- Material and Finishes Selection
- Furniture Selection
- Construction Drawings
- Services Coordination
- Site Queries
- Project Administration



nando's epping.

Client Nando's Australia
Interior Design loopcreative
Location Epping, Melbourne

Project Nando's Epping
Year 2019
Type Hospitality

Rendered Services

Concept Design
Spatial Planning
Design Development
Joinery Design
Material and Finishes Selection
Furniture Selection
Construction Drawings
Services Coordination
Site Queries
Project Administration

loopcreative



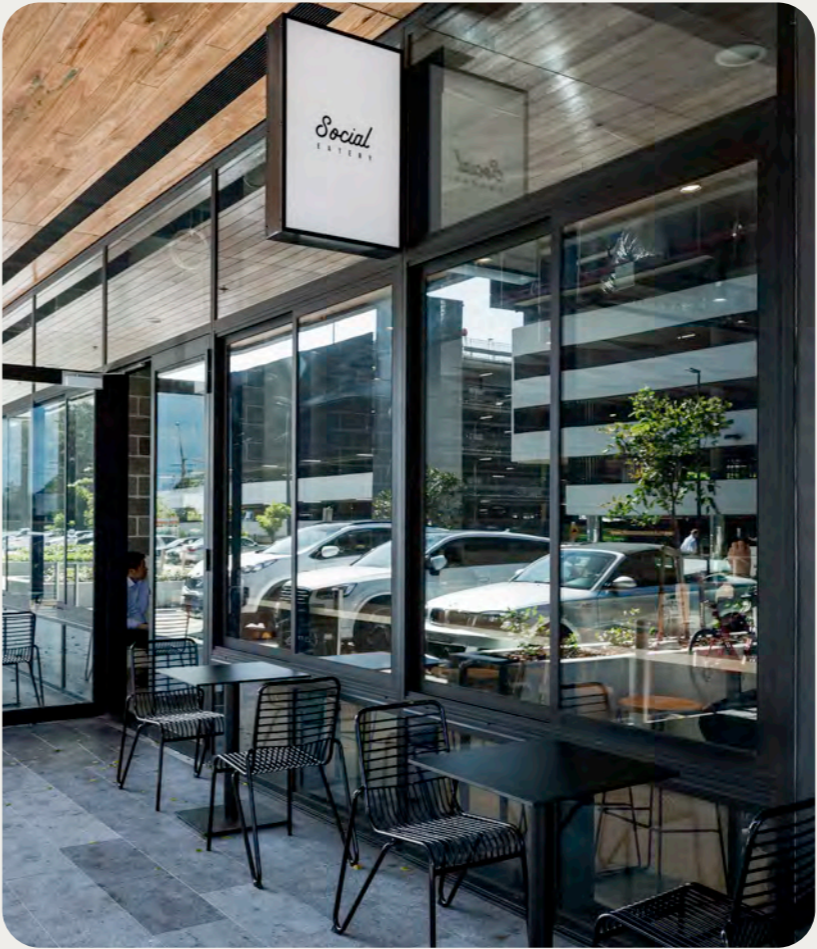
social eatery.

Client Social Eatery
Interior Design loopcreative
Location Mascot, Sydney

Project Social Eatery
Year 2019
Type Hospitality

- Rendered Services
- Concept Design
 - Spatial Planning
 - Design Development
 - Joinery Design
 - Material and Finishes Selection
 - Furniture Selection
 - Construction Drawings
 - Kitchen Design
 - Services Coordination
 - Tender Analysis
 - Shop Drawing Review
 - Site Queries
 - Project Administration

Photography Michael Wee



whisk & pin.

Client Whisk & Pin Bakery
Interior Design loopcreative
Location The Rocks, Sydney

Project Whisk & Pin
Year 2019
Type Retail / Hospitality

- Rendered Services
- Concept Design
 - Spatial Planning
 - Design Development
 - Joinery Design
 - Material and Finishes Selection
 - Furniture Selection
 - Construction Drawings
 - Kitchen Design

loopcreative



golston jewellery.

Client Golston Jewellery
Interior Design loopcreative
Location Westfield Pitt St, Sydney

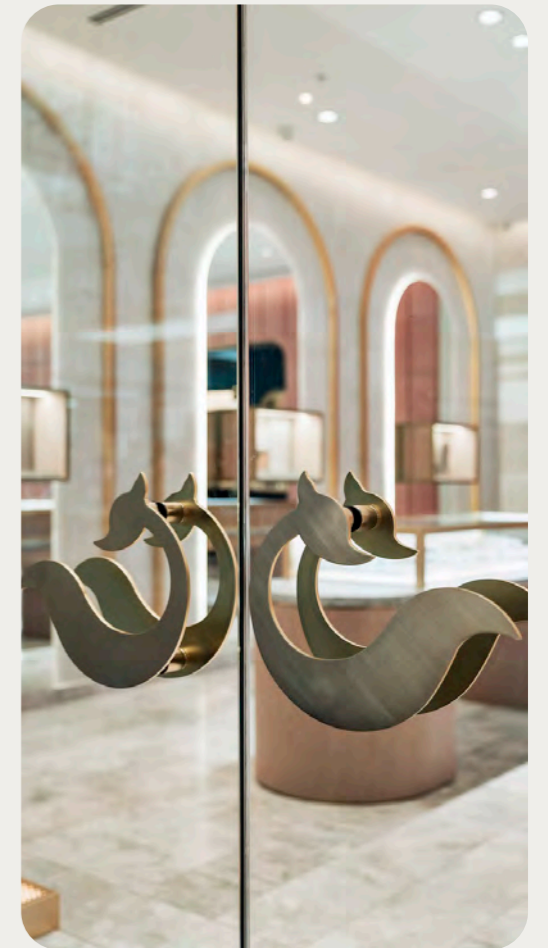
Project Golston Jewellery
Year 2018
Type Retail

Rendered Services

Spatial Planning
Design Development
Joinery Design
Construction Drawings
Services Coordination
Tender Analysis
Site Queries
Project Administration

Photography Michael Wee

loopcreative



camperdown fitness.

Client Camperdown Fitness
Interior Design loopcreative
Location Camperdown, Sydney

Project Camperdown Fitness
Year 2018
Type Retail

Rendered Services

- Concept Design
- Spatial Planning
- Design Development
- Joinery Design
- Material and Finishes Selection
- Construction Drawings





**claire
hammond**

+64 21 739 105

claire@ritualinteriors.co.nz